



Efficiency & Safety



Achieve increased efficiency & improve on-site safety with this pneumatic driver.

Driving form stakes into an array of challenging ground types is made easy with this game changer for setting up form work. When compared to the traditional way of fixing form-stakes into place (hammering) this Stake Driver can be 4x faster.

Reduction of on-site injuries.

Reducing injuries on-site is important to the construction industry. Accidental injuries associated with the traditional method of hammering form-stakes into the ground can cause unrepairable damage to the hands or eyes. The repetitional impact from using a hammer on form stakes can also lead to repetitive strain injury (RSI). The term 'RSI' is used to describe a range of different problems that affect your muscles, tendons, joints and nerves in your upper body.



Stock Code:
SD25



The Stake Driver has been tested for a vibration value of 3.26 Ai(8).

Dual Operational Height.

The Stake Driver can be operated at floor level or at height via two triggers situated at ergonomically friendly points on the device. Once the Honda powered GX35 has been pull started each trigger has a stop button, a lock button and a driving trigger to control the pneumatic driver.



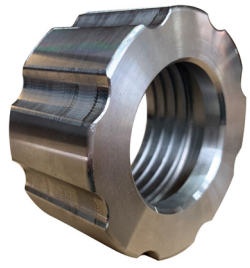


Form Stake Drive Shims x 3

The hard wearing titanium drive Shim comes with 3 different sizes: 20mm, 25mm and 41 mm diameter.



These shims can be inserted and held into place via a simple screw in system. Ensure even distribution and longevity of stakes.



Unlike hammering the form stakes in, using the Drive Shim prevents mushrooming and splintering which can occur over time. The long-term cost saving of keeping these form stakes usable on multiple jobs is very positive for the industry.

The Stake Driver can be purchased with a cart. This allows you to wheel the Stake Driver around work sites with ease. Specially designed to house form stakes and pin pullers such as the Jackjaw.



This cart has been designed to move the stake driver around site with ease and helps to keep the product in an upright position when not in use. Form stakes and pin pullers (see images below, right) can also be housed on the cart which can be very useful.



Stock Code:
SKUSDL



Removing stakes can be made as easy as putting them in with the Jackjaw pin pullers. Learn more on the next page.





POWERED by **HONDA™**

The world's first 360° inclinable 4-stroke engine, for operation in any position. Low fuel and oil consumption. Easy starting, low noise and superb acceleration.

- **Recoil Starter**
- **4-stroke single cylinder OHC petrol engine**

Related Products

Concrete Formwork Stakes



Hard steel Form stakes are available in a number of sizes from Speedcrete. If you are working on a large concrete surface stakes are used to ensure your form remains in the correct position for your concrete pour which allows the concrete to set in the right shape.

Slide Stake Pocket



Stock Code: 869-025

Slide Stake Pockets are used to make a sturdy connection between the form. These stake pockets have pre-drilled holes that allow you to screw or nail tightly to wooden forms offering you a very flexible tool for the Job-site.

Reinforces form joint Convenient connection to wood with pre-drilled holes.

Securely locks to 3/4" or 7/8" dia. stakes - Quick vertical adjustment.

Jackjaw Stake Extractor



JackJaw stake extractors pull stakes straight up out of the ground without bending them or breaking the fresh concrete, even when the stake is flush with the top of the form. Available in various sizes.



Unit 1 Ashfield Trading Estate, Ashfield Road,
Salisbury, Wiltshire, SP2 7HL

www.speedcrete.co.uk