

**GPX90**
GRADE

PRODUCT DATA SHEET

GENERAL PURPOSE DIAMOND BLADE

GPX90 GENERAL PURPOSE

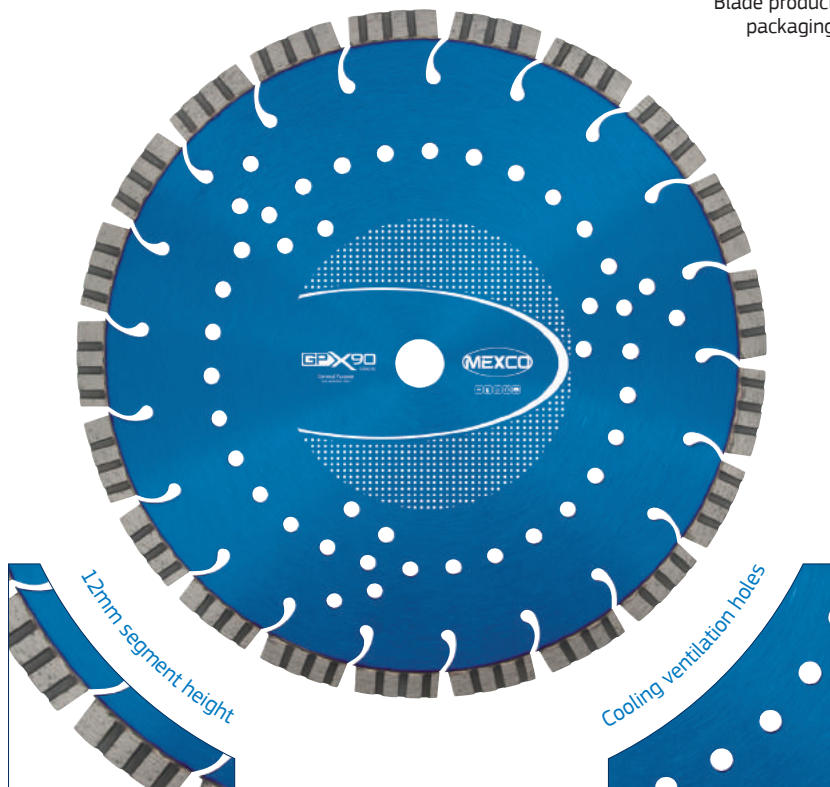
This product offers excellent cutting speeds and lifetime providing consistent results in non abrasive building products.

KEY FEATURES

- 10mm Segment Height / 12mm on 300mm diameter
- Cooling Ventilation Holes
- Laser Welded Segments



Mexco Diamond
Blade product
packaging



PRODUCT OVERVIEW:

Grade: X90**Segment Height:** 10 / 12mm***Segment Type:** Segmented**Segment Attachment:** Laser Welded**Gullet Type:** Tear Drop**Dry/Wet:** Wet or Dry Use**Ventilation:** Yes**Recommended for:** Angle Grinder, Disc Cutter, Bench Saw & Floor Saw**X90**
GRADE

LOW WEAR RATE

The X90 range of products allow a broad range of cutting applications and will provide fast cutting characteristics combined with low wear rates and an excellent lifetime.

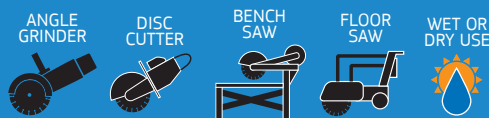


PRODUCT DATA SHEET

DIAMETERS AVAILABLE:

Code	Diameter (mm) (in)		Segment Width (mm)	Bore Size / s (mm)
GPX9011522	115	4.5	2.0	22.23
GPX9012522	125	5	2.0	22.23
GPX9018022	180	7	2.4	22.23
GPX9023022	230	9	2.4	22.23
GPX9030020*	300	12	3.2	20.00
GPX9035020	350	14	3.2	20.00
GPX9035025	350	14	3.2	25.40
GPX9040020	400	16	3.4	20.00
GPX9040025	400	16	3.4	25.40
GPX9045025	450	18	3.6	25.40
GPX90500LHP	500	20	4.0	25.40
GPX90600LHP	600	24	4.7	25.40

SUITABLE FOR USE ON:



APPLICATION:

- Non Abrasive Indian Sandstone
- Hard Facing Brick
- Medium Facing Brick
- Hard Slate
- River Gravel Aggregate Concrete
- Flint Aggregate Concrete
- Reinforced Concrete
- Concrete Kerbs
- Concrete Slabs
- Reinforced Lintels
- Hard Limestone
- Limestone Aggregate Concrete
- Concrete Pavements
- Soft Facing Brick
- Concrete Blocks Over 15kn
- Hard Sandstone



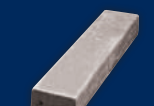
Hard Slate

Flint Aggregate
ConcreteReinforced
Concrete

Concrete Kerbs



Concrete Slabs

Reinforced
Lintels

- **RECOMMENDED**
to cut these materials

- **Will cut these materials**
with the possibility of reduced
lifetime / glazing

www.mexco.co.uk | Tel: 0845 602 4274 | Email: sales@mexco.co.uk

CONFORMS TO EN13236

Please note: Before using any cutting, grinding or drilling tool you should always consult your machine manufacturers hand book to establish the consumable tools suitability for the machine being used. Always wear the correct safety clothing and accessories before you commence use of the equipment.